

Atmospheric general circulation of synchronously rotating terrestrial planets: Dependence on planetary rotation rate

S. Noda^(1,6), M. Ishiwatari^(2,3), K. Nakajima⁽⁴⁾, Y. O. Takahashi^(1,3),
S. Nishizawa⁽⁷⁾, M. Onisi^(1,3), G. L. Hashimoto⁽⁵⁾,
K. Kuramoto^(2,3), Y.-Y. Hayashi^(1,3)

(1) Kobe University, Kobe, (2) Hokkaido University, Sapporo,
(3) Center for Planetary Science, Kobe, (4) Kyushu University, Fukuoka,
(5) Okayama University, Okayama, (6) Meteorological Research Institute, Tsukuba,
(7) RIKEN Advanced Institute for Computational Science, Kobe

Synchronously rotating planets

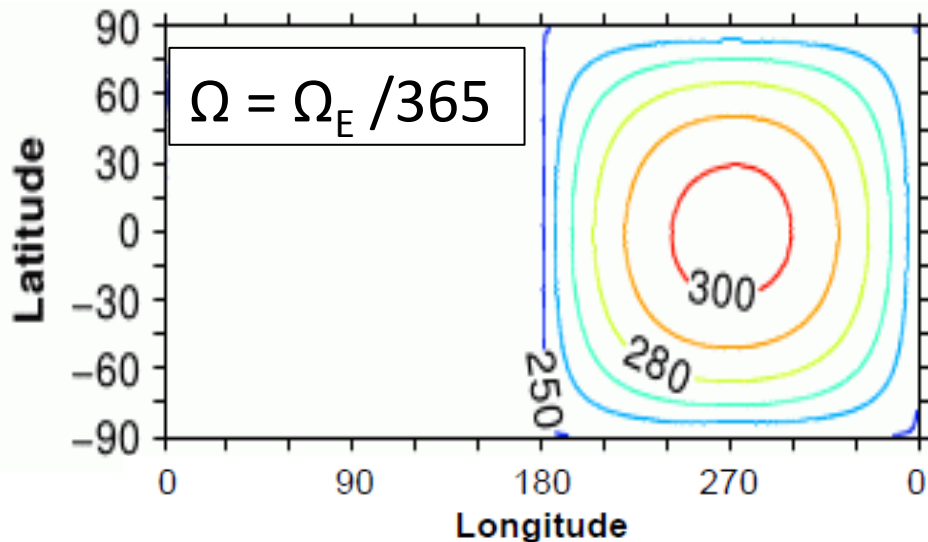
- Some terrestrial exoplanets are expected to be tidally locked.
- Climates of such planets?
 - Numerical experiment of aqua-planet with fixed dayside and nightside
- Previous studies: Atmospheric general circulation model experiments
 - Joshi et al. (1997)
 - Joshi (2003)
 - Merlis and Schneider (2010)
 - Edson et al. (2011)



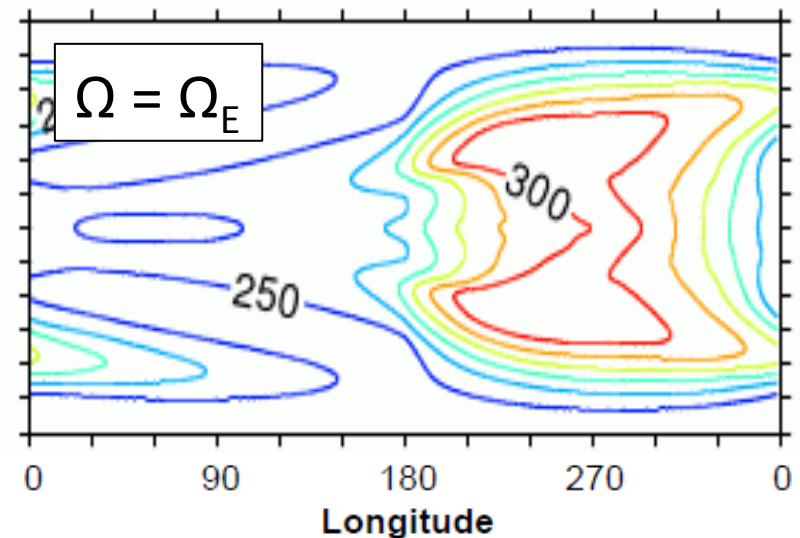
Objectives

- Examination of dependences of circulation and heat/water transports on planetary rotation rate (Ω)
 - Atmospheric structure for intermediate Ω ?

Surface temperature (Merlis and Schneider, 2010)



Slowly rotating regime



Rapidly rotating regime

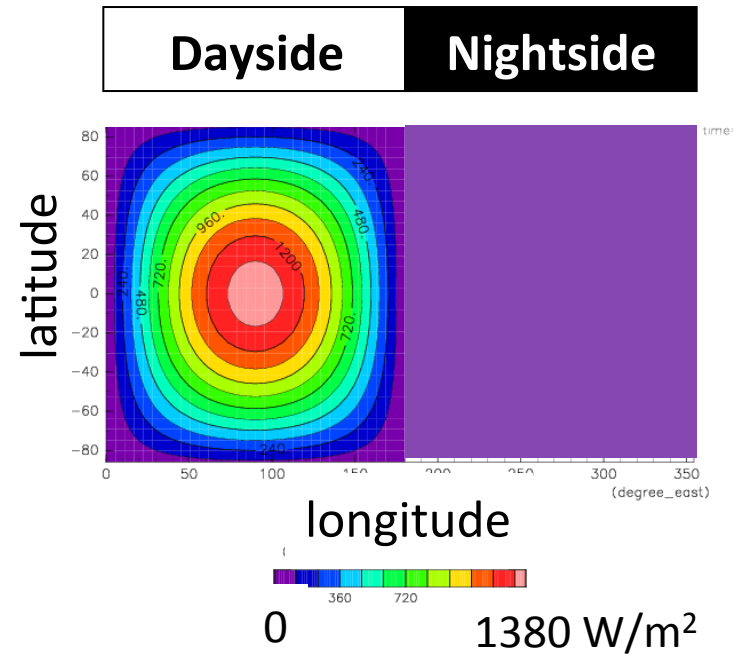
General circulation model

dcpam5 (<http://www.gfd-dennou.org/library/dcpam/index.htm.en>)

Basic equations of dynamical part	Primitive equation (hydrostatic, ideal gas), vertical coordinate : $\sigma = p/p_s$
Atmospheric composition	“Water vapor” and “dry gas”
Radiation process	Water vapor : gray to IR radiation Dry gas: transparent
Cumulus process	Convective adjustment (Manabe et al., 1965) condensed water is removed from system immediately (no cloud)
Turbulent vertical mixing	Mellor and Yamada (1972) Level 2
Surface condition	Aqua-planet, flat surface Zero heat capacity

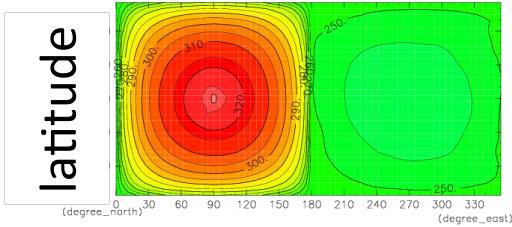
Experimental configuration

- Solar radiation flux is given only to dayside
- Planetary rotation rate: $0 - \Omega_E$ (Earth)
 - 18 cases
- Planetary radius: 6.371×10^6 m
- Solar constant: 1380 W m^{-2}
- gravitational acceleration: 9.8 m s^{-2}
- Averaged surface pressure: 10^5 Pa
- surface albedo: 0
- Resolution
 - Horizontal truncation wave number: T21
 - Vertical levels: L16
- Initial condition: isothermal (280K) rest state
- Integration time: 2000 days (last 1000 days is used for analysis)



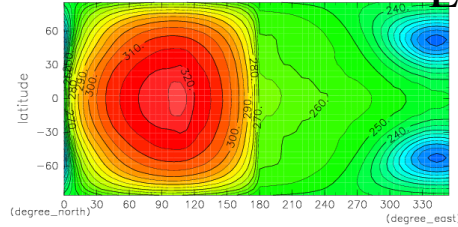
Surface temperature for various Ω

$\Omega = 0$



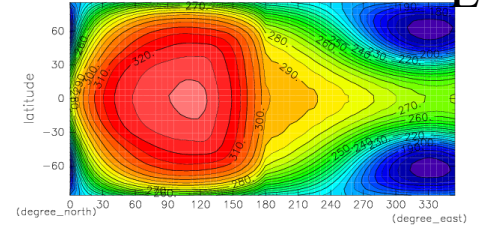
longitude

$\Omega = 0.05 \Omega_E$



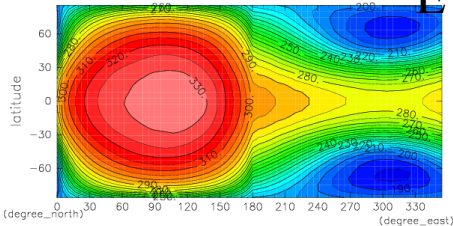
longitude

$\Omega = 0.15 \Omega_E$



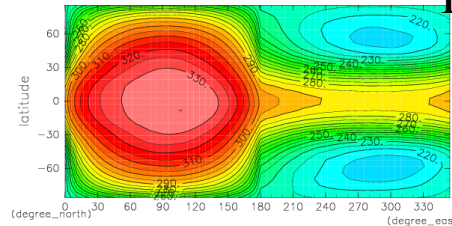
longitude

$\Omega = 0.25 \Omega_E$



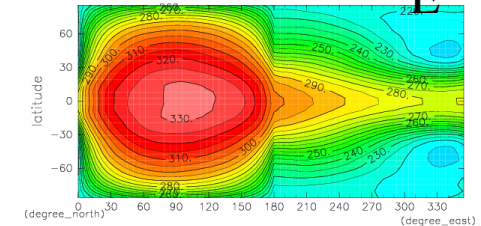
longitude

$\Omega = 0.33 \Omega_E$



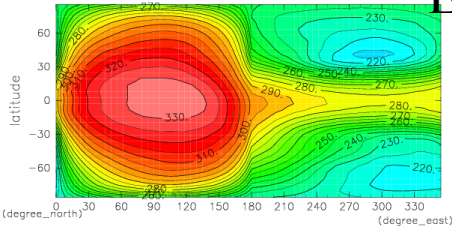
longitude

$\Omega = 0.5 \Omega_E$



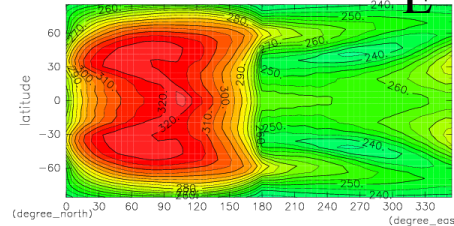
longitude

$\Omega = 0.67 \Omega_E$



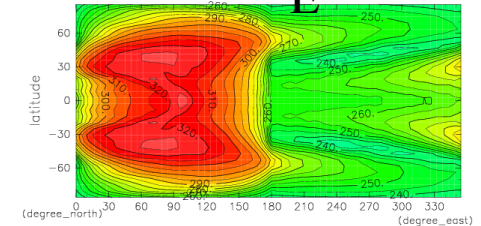
longitude

$\Omega = 0.8 \Omega_E$

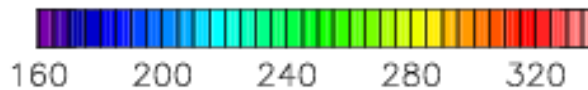


longitude

$\Omega = \Omega_E$



longitude



Time mean over
1000-2000day

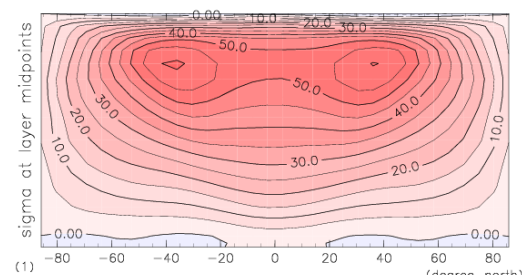
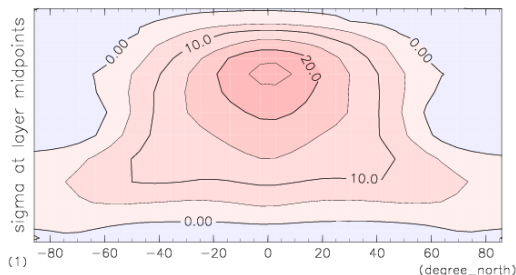
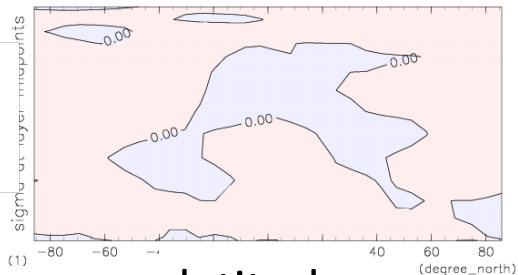
Zonal mean zonal wind for various Ω

$\Omega = 0$

$\Omega = 0.05 \Omega_E$

$\Omega = 0.15 \Omega_E$

sigma

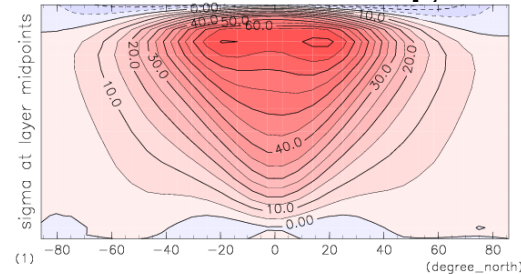
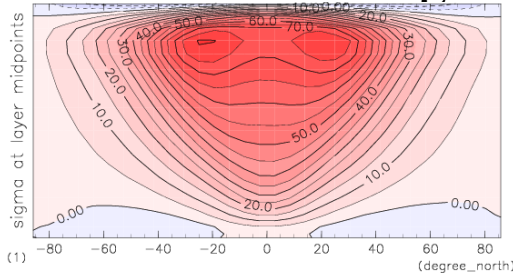
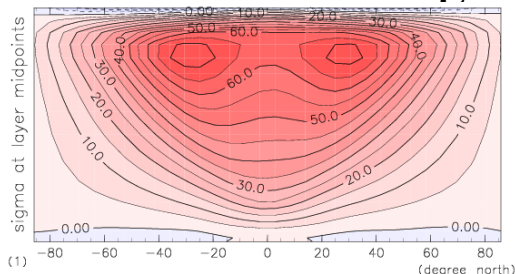


latitude

$\Omega = 0.25 \Omega_E$

$\Omega = 0.33 \Omega_E$

$\Omega = 0.5 \Omega_E$

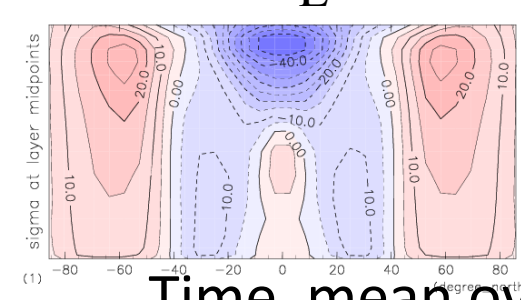
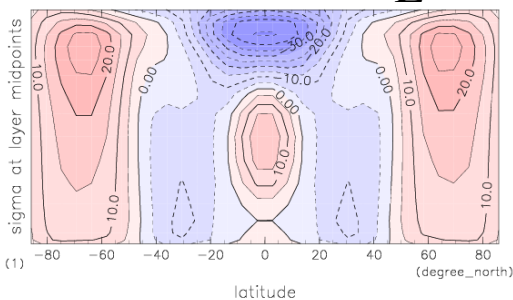
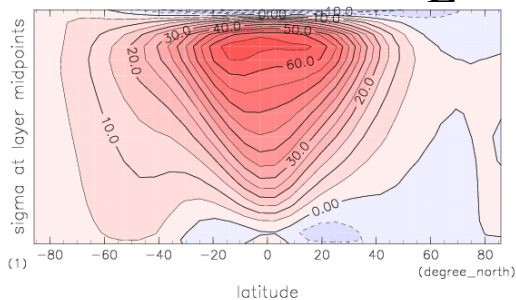


latitude

$\Omega = 0.67 \Omega_E$

$\Omega = 0.8 \Omega_E$

$\Omega = \Omega_E$



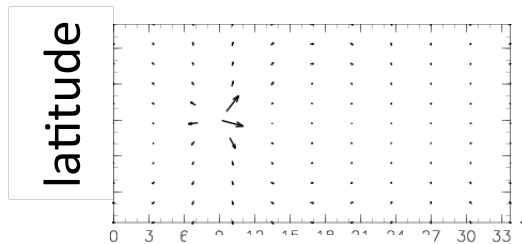
CONTOUR INTERVAL = 5.000E+00

-100 m/s  100 m/s

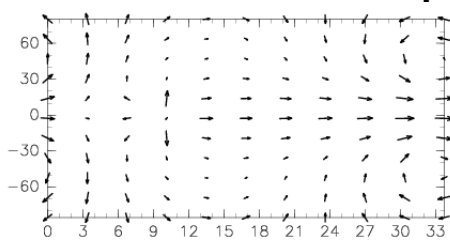
Time mean over
1000-2000day

Wind ($\sigma=0.2$) for various Ω

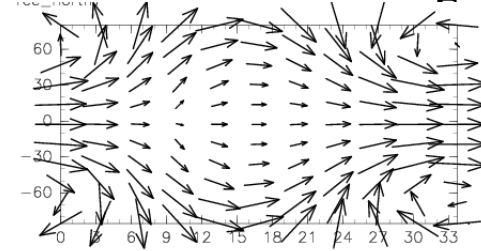
$\Omega = 0$



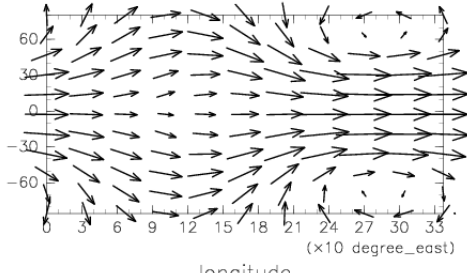
$\Omega = 0.05 \Omega_F$



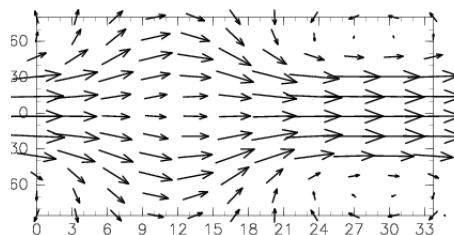
$\Omega = 0.15 \Omega_F$



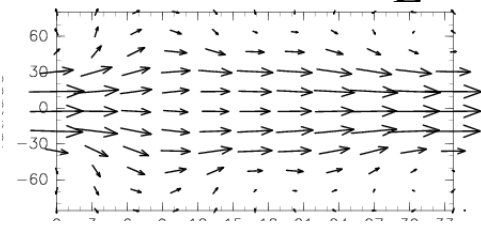
$\Omega = 0.25 \Omega_F$



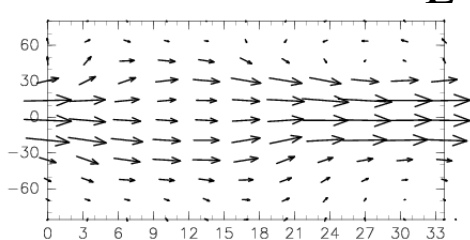
$\Omega = 0.33 \Omega_F$



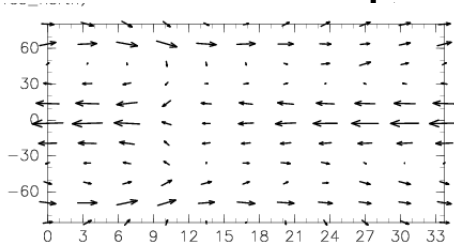
$\Omega = 0.5 \Omega_E$



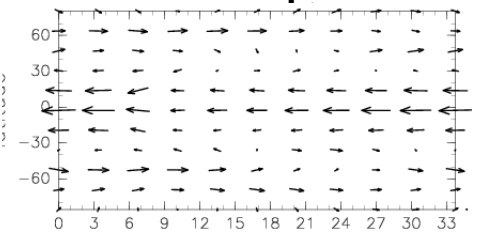
$\Omega = 0.67 \Omega_E$



$\Omega = 0.8 \Omega_F$



$\Omega = \Omega_F$



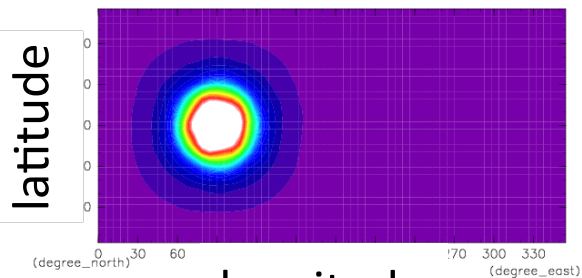
100 m/s



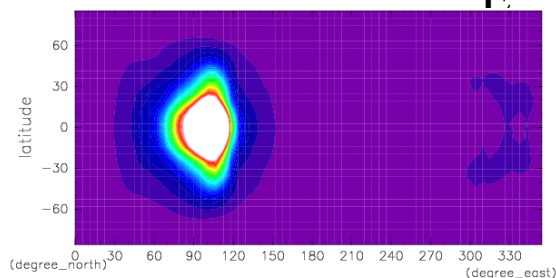
Time mean over
1000-2000day

Condensation heating rate for various Ω

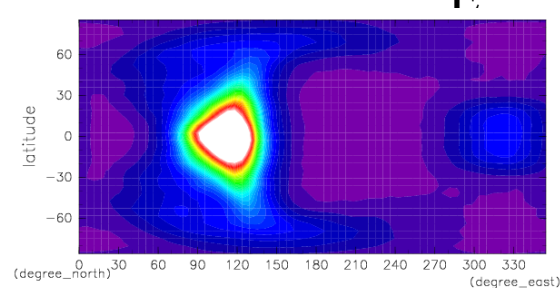
$\Omega = 0$



$\Omega = 0.05 \Omega_F$

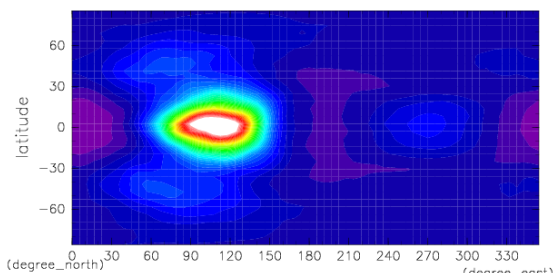


$\Omega = 0.15 \Omega_F$

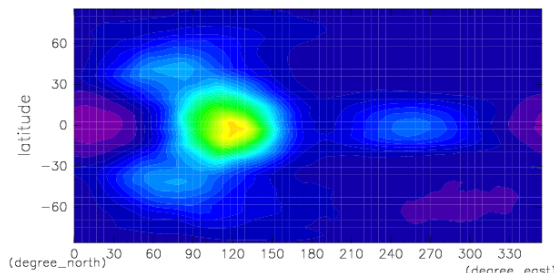


longitude

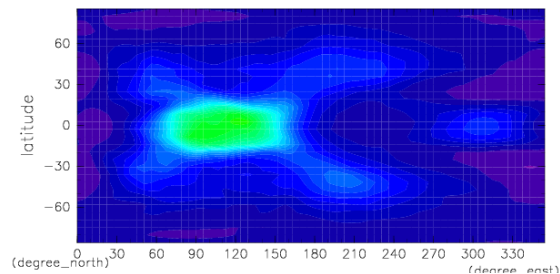
$\Omega = 0.25 \Omega_E$



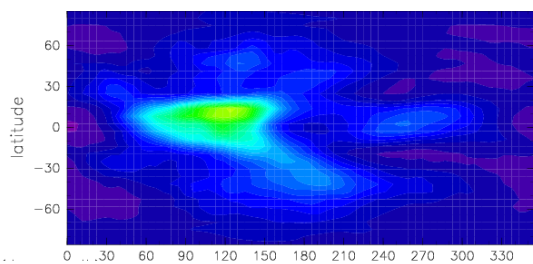
$\Omega = 0.33 \Omega_E$



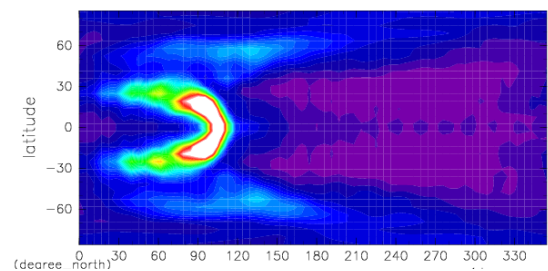
$\Omega = 0.5 \Omega_F$



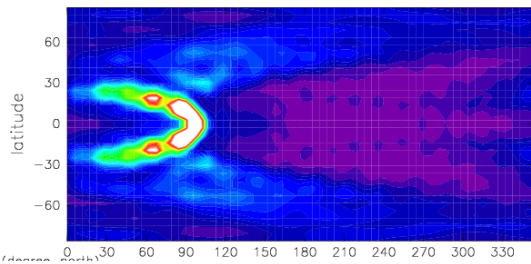
$\Omega = 0.67 \Omega_E$




$\Omega = 0.8 \Omega_E$



$\Omega = \Omega_E$

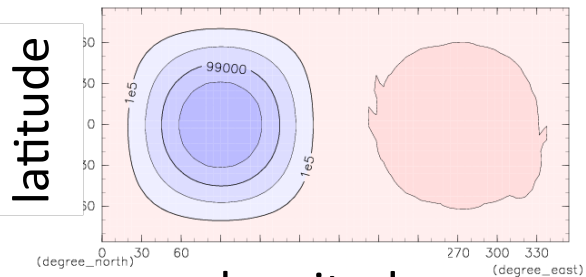


0 W/m²  2000 W/m²

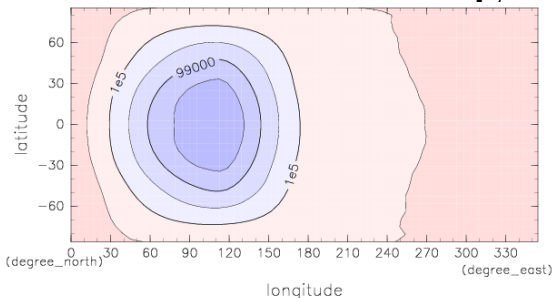
Time mean over
1000-2000day

Surface pressure for various Ω

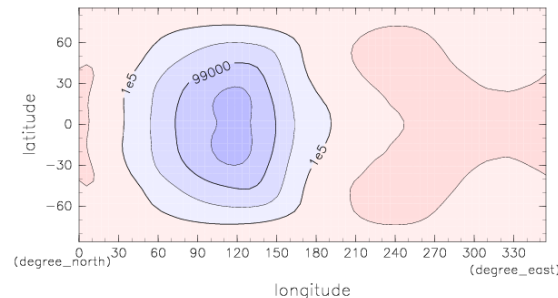
$\Omega = 0$



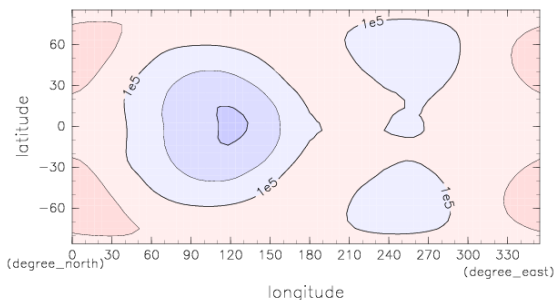
$\Omega = 0.05 \Omega_F$



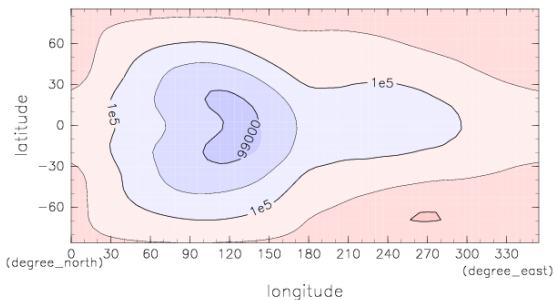
$\Omega = 0.15 \Omega_F$



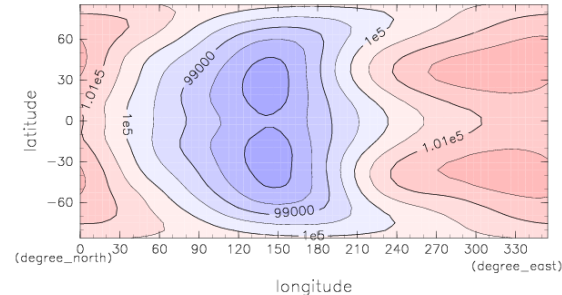
$\Omega = 0.25 \Omega_F$



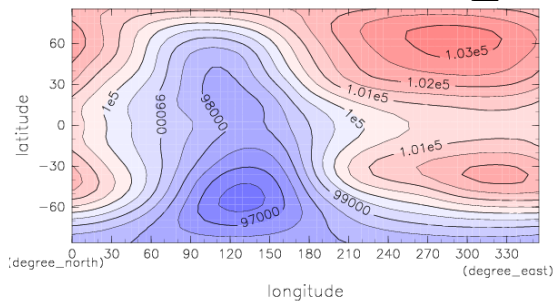
$\Omega = 0.33 \Omega_F$



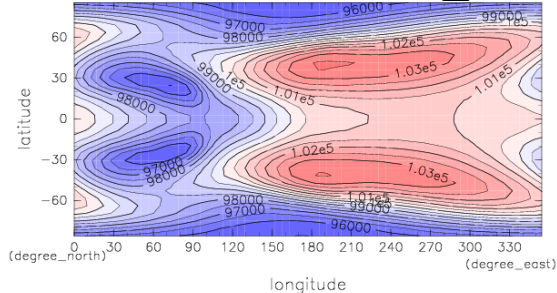
$\Omega = 0.5 \Omega_F$



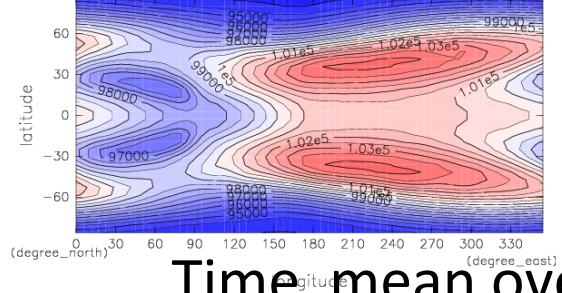
$\Omega = 0.67 \Omega_E$



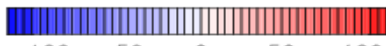
$\Omega = 0.8 \Omega_E$



$\Omega = \Omega_F$



CONTOUR INTERVAL = 5.000E+00

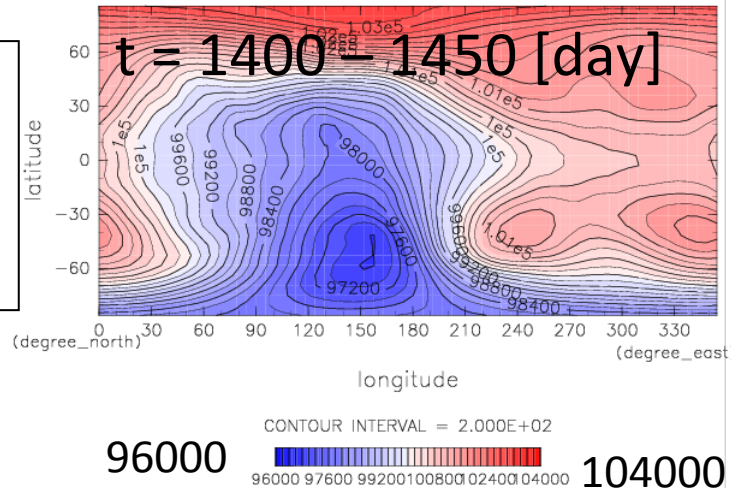
93000 Pa  107000 Pa

Time mean over
1000-2000day

Asymmetric state: $0.2\Omega_E - 0.67\Omega_E$

North-south
Asymmetric
State

Surface pressure for $0.5\Omega_E$

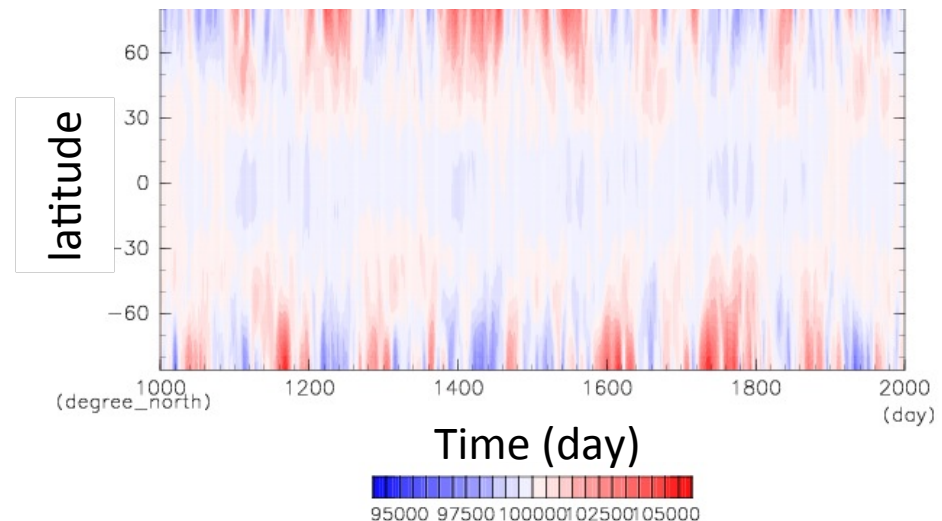


✖ イメージを表示できません。メモリ不足のためにイメージを開くことができないか、イメージが破損している可能性があります。コンピューターを再起動して再度ファイルを開いてください。それでも赤い x が表示される場合は、イメージを削除して挿入してください。

$t = 1750 - 1800$ [day]

- Oscillation
 - Non-periodic for large Ω
 - “period”:
10day – 1000day
 - also in high reso. experiments

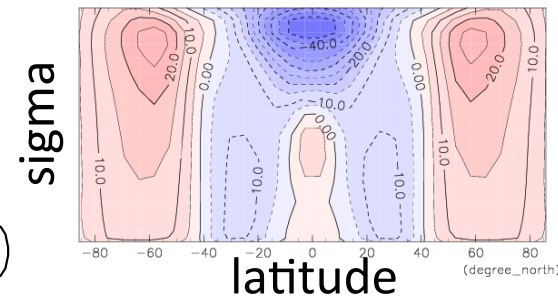
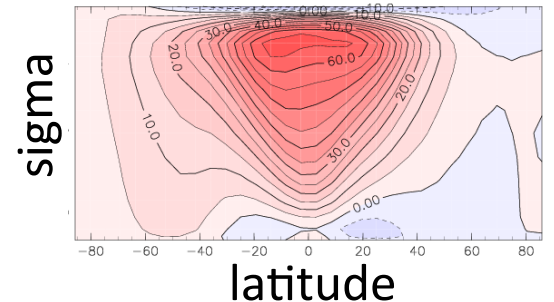
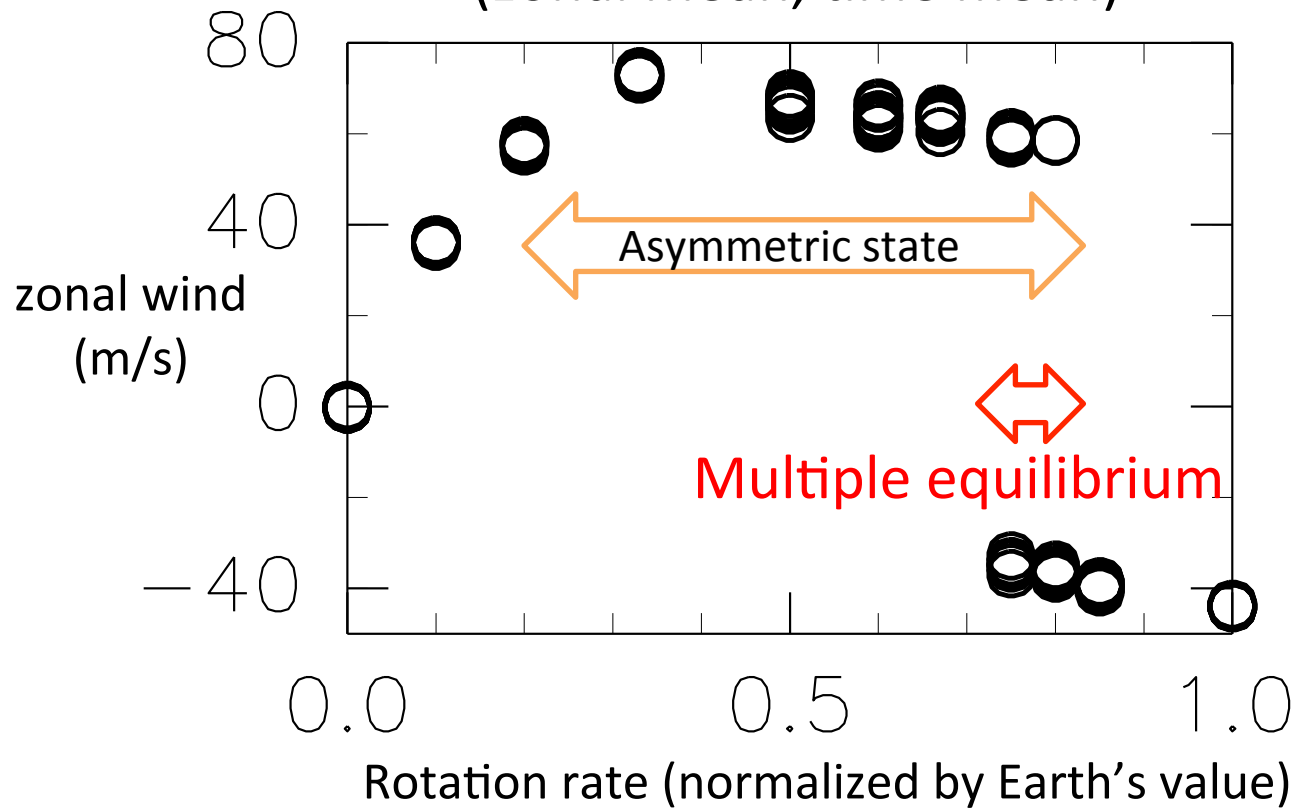
zonal mean surface pressure



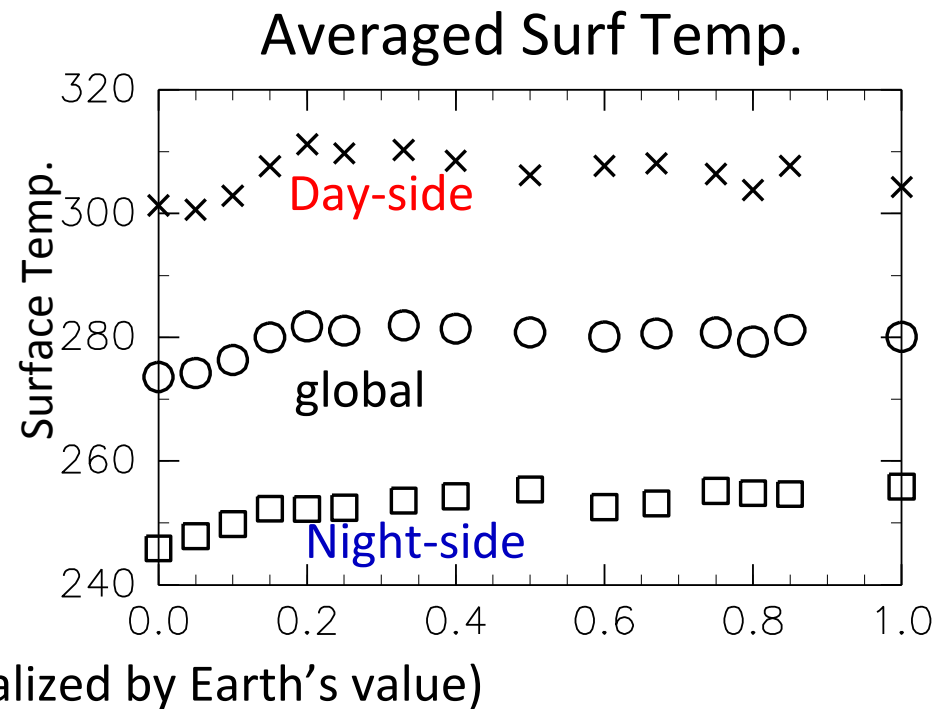
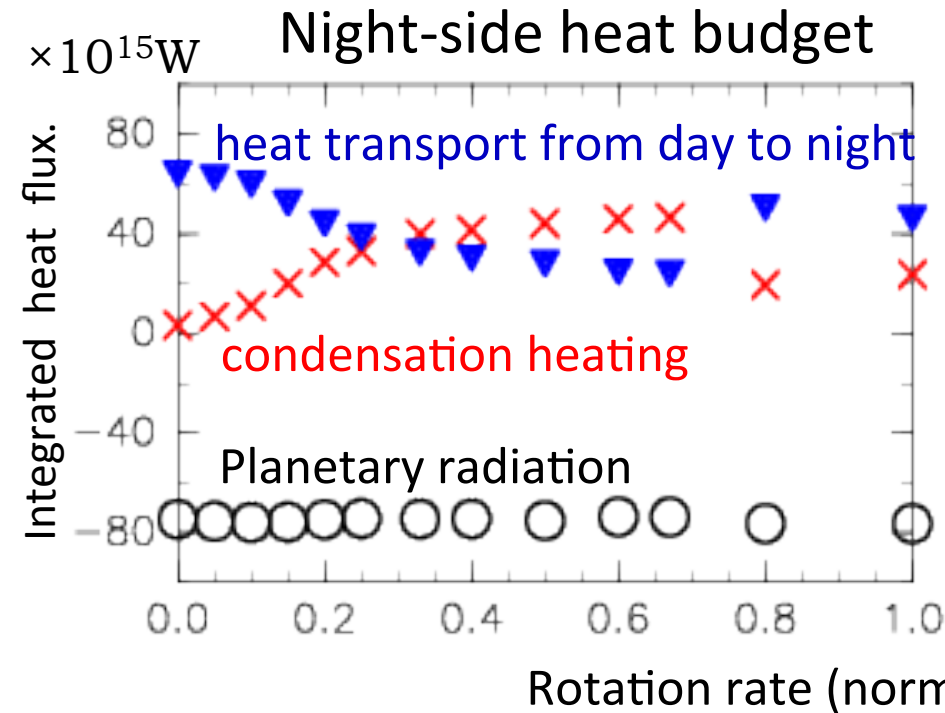
Multiple equilibrium states

- 10 member Ensemble experiment
 - different random seed for Temperature

zonal wind at $\sigma=0.2$ level at the equator
(zonal mean, time mean)



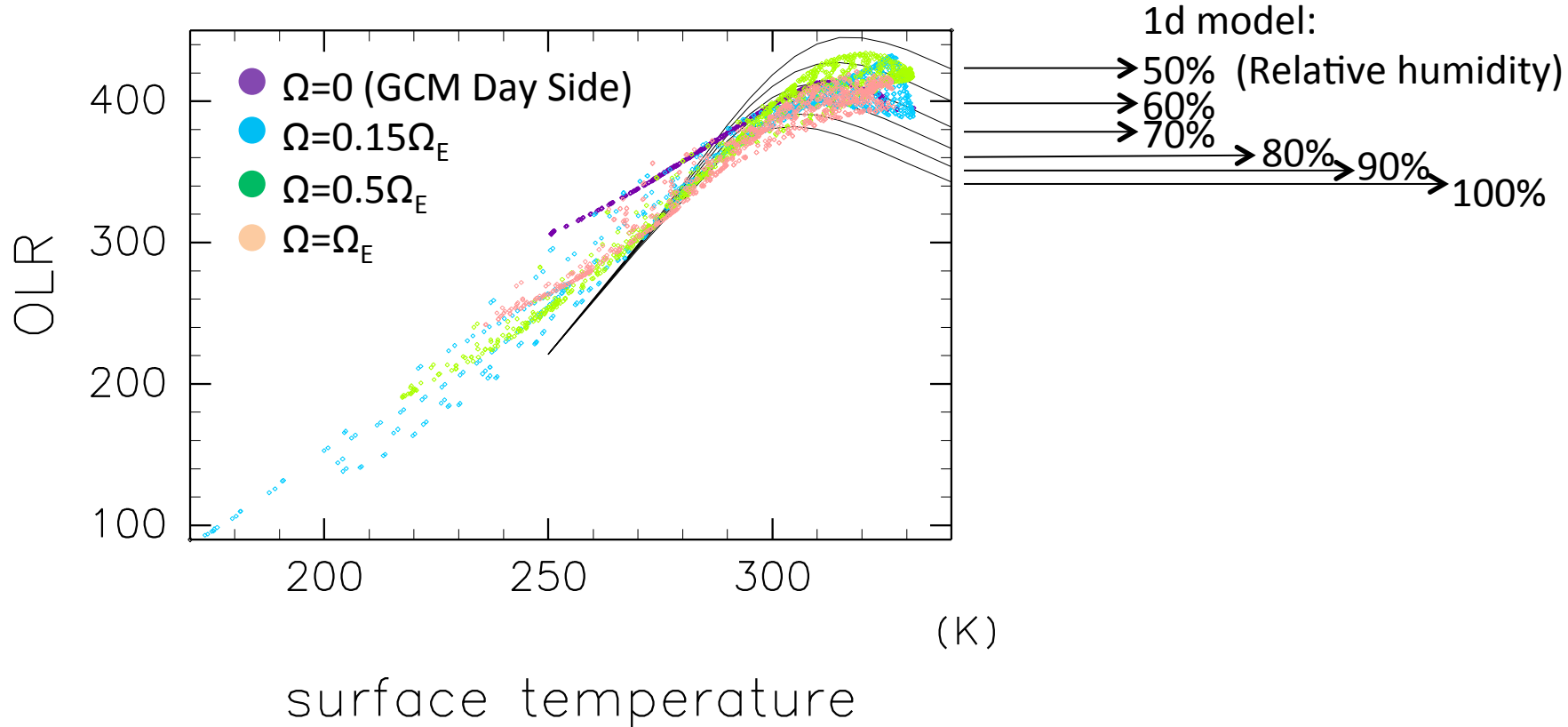
Dependence of heat budget on Ω



- Small dependence of summation of sensible/latent heat transports on Ω
- Total heat transport may be determined by (Incident solar flux) – (radiation limit)
 - Radiation limit: Nakajima et al. (1992), Ishiwatari et al. (2002)

Comparison with 1-d model

(W m⁻²)



- Outgoing Longwave Radiation does not exceed radiation limit obtained by 1-dim radiative convective equilibrium model.

Summary

- Dependence of atmospheric states of synchronously rotating aqua-planet on Ω is studied by a GCM.
- Summation of sensible/latent heat transport is almost independent of rotation rate
- There exists a definite regime boundary between “slowly rotating regime” and “rapidly rotating regime”
 - Existence of multiple equilibrium solutions
- There exist a range where asymmetric states appear.